

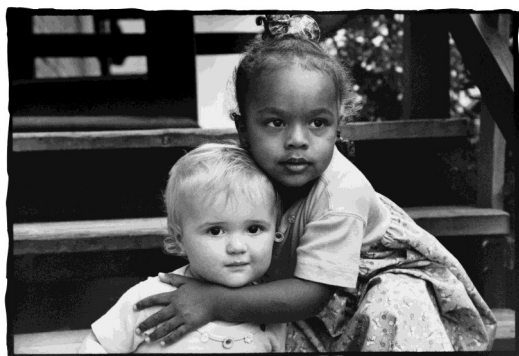


# LIFEWORKS

N O R T H W E S T

Mental Health and  
Addiction Services  
for a Healthy  
Community

2013 Program Listings



Here is a list of LifeWorks NW programs that serve children, youth, families, adults, and older adults. Contact the number listed to learn more about current opportunities within the programs, or you may want to check out our website at [www.lifeworksnw.org](http://www.lifeworksnw.org) for more information.

For more than 50 years, we have been providing help, hope and recovery with clinics and service centers throughout Multnomah, Washington and now Clackamas Counties. At LifeWorks NW, we believe that life works when you get the support you need — and we are here to provide that support. Please call us.

## Washington County

Service	Description of Services	Locations	Contact
<b>Alcohol and drug abuse services for adolescents</b>	The Youth Addictions program provides alcohol and drug outpatient services for youth ages 12 to 18 (19 if still in High School) and their families. Services are available in the community, including schools.	Cedar Mill Hillsboro Tigard	503-645-9010
<b>Alcohol and drug abuse services for Latino youth</b>	The Latino Youth Addictions program provides bilingual, culturally specific alcohol and drug outpatient services for Latino youth ages 12 to 18 (19 if still in High School) and their families, including integrated family and mental health services. Services are available in the community, including schools.	Cedar Mill Hillsboro Tigard	503-645-9010
<b>Community-based intensive mental health services</b>	Intensive Treatment Services are conducted in the home and/or community for youth ages 3 to 18 and their families. Participants must meet eligibility requirements and have approval by the county Mental Health Organization. Services can be provided in Spanish.	Community-based	503-593-6208
<b>Day treatment for adolescents</b>	The Adolescent Day Treatment program provides all-day treatment and education for youth ages 11 to 18 who are experiencing serious psychiatric difficulties. Participation requires school district authorization, referral by local Mental Health Organizations, Kaiser Permanente, or through private pay.	Tigard	503-684-1424 ext. 1212
<b>Day treatment for young children</b>	The Children's Day Treatment program provides all-day treatment and education for children ages 3 to 11 who are experiencing serious psychiatric difficulties. Participation requires school district authorization or referral by local Mental Health Organization.	Tigard	503-849-4333
<b>Early psychosis intervention for youth and young adults</b>	The Early Assessment Support Alliance (EASA) program provides individual/family support, education, advocacy, and treatment to persons aged 15 to 25 who are experiencing emerging symptoms of psychosis. The program also has a robust family component including multi-family groups. EASA will serve individuals who are publicly or privately insured or who have no insurance.	Beaverton Outreach across county	503-705-9999

## Washington County (continued)

Service	Description of Services	Locations	Contact
<b>Foster care to adulthood transition</b>	The Independent Living Program assists adolescents in successfully transitioning from foster care to living on their own. Participants must be referred through Child Welfare.	Beaverton	503-627-9194
<b>Group skills training for children with mental health needs</b>	The SPLASH program is offered for week-long sessions over the summer and the SOAR program is offered on school year in-service days for school-aged children. Skills training is provided in a group setting with use of community activities to reinforce learning. Participants must have a qualifying mental health need with referral from Washington County Mental Health Organization.	Community-based. Sites and locations vary.	503-684-1424
<b>Intensive mental health services for adolescents and young adults</b>	The Transition Age Youth Intensive Services (TAYIS) program serves clients between ages 16 to 24 with severe mental illness. Focus of treatment is client centered and strengths based. Treatment services include individual/group skills training, supported employment/education, supported housing, life skills and psychiatric treatment. Services are oriented towards young adults transitioning into independence.	Beaverton Outreach across county	503-449-2249
<b>Mental health consultation to Head Start classrooms</b>	The Head Start/Early Head Start Consultation program provides mental health consultation in area Head Start and Early Head Start classrooms.	Classroom based	503-704-4276
<b>Mental health counseling and services</b>	Child and Family Outpatient Mental Health Services provide therapy, mental health assessments and treatment planning, medication management, skills training and consultation. Community-based services may also be provided as needed.	Cedar Mill Hillsboro Tigard	503-645-9010
<b>Prevention services for the Latino community</b>	The Promotora Program connects families to community resources while offering individual parenting strategies and parenting classes. The program offers in-home services to Latino families with children 0 to 12 years of age.	Western Washington County	503-887-9149
<b>Parent education and support</b>	The Healthy Start Program is a long term home visiting program for first time parents. LifeWorks NW provides parent education and child development services in the home.	Home-based, county-wide	503-846-2114
<b>Parent education in the home</b>	The Family Coaching program provides in-home parent training to help families with school-age children (elementary through high school) who are struggling with challenging behaviors. Families may self refer; referrals are also accepted from community partners. Services can be provided in Spanish.	Home-based, county-wide	503-627-9194
<b>Respite services for youth</b>	The respite services for youth program offers in-home respite to provide much needed breaks for families of youth with significant mental health needs.	Varies	503-805-4293
<b>Young child mental health services</b>	The Parent – Child Interaction Therapy program provides mental health assessment and treatment to children 2 to 7 years old and their families. The program involves weekly sessions and in-home practice. Services can be provided in Spanish.	Cedar Mill Hillsboro Tigard	503-645-9010

## Multnomah County

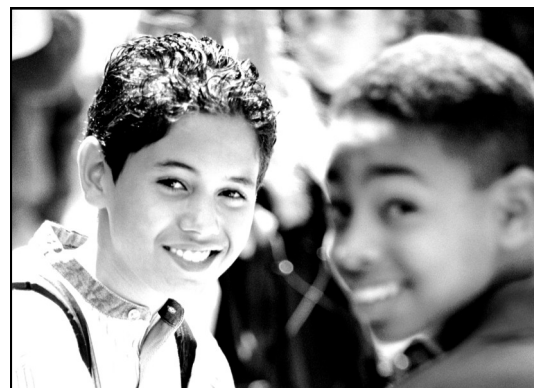
Service	Description of Services	Locations	Contact
<b>Alcohol and drug abuse services for African American youth</b>	The Recovery, Empowerment, Achievement in Life (REAL) program provides culturally-specific alcohol and drug treatment for adolescent African American males and females. The program includes outpatient, day treatment, residential and after care services. Family and mental health services are included. Services are available in the community including in schools.	NE Portland	503-849-4333 or 503-645-9010
<b>Alcohol and drug abuse services for youth</b>	Youth Addictions provides alcohol and drug treatment services for youth ages 12 to 18 and their families, including integrated family and mental health services. Services are available in the community including in schools.	Rockwood	503-645-9010
<b>Assessment, consultation, services for protective services</b>	The Family Engagement program provides child mental health assessments for youth entering the child welfare system. Mental health consultation and treatment services for the child and family are provided.	N. Portland	503-327-1450
<b>Community-based intensive mental health services</b>	The Intensive Community-Based Treatment Services program provides intensive treatment services conducted in the home and/or community for youth ages 3 to 18 and their families. Participants in this program must meet eligibility requirements and have approval by the county Mental Health Organization.	Community-based	503-710-1513
<b>Day treatment for adolescents</b>	The Nathan Nickerson Day Treatment Center provides all-day treatment for youth 11 to 18 experiencing serious psychiatric difficulties. Participation requires school district authorization or referral from local Mental Health Organization.	NE Portland	503-849-4333
<b>Family Strengthening Prevention Service</b>	Strengthening Families is a nationally recognized prevention model designed to improve family relationships for youth (10-14). It is a parent, youth, and family skills building curriculum.	Schools-based	503-282-3296 Ext 1812
<b>Home visiting/resource and referral in Multnomah County</b>	Family Support and Connections (FSC) is a home visiting program that provides parent education, advocacy and connection to community resources. Participation in the program is dependent on the client being a TANF (temporary assistance for needy families) recipient.	Home-based, County wide	503-282-3296 ext. 3868
<b>Home visiting/resource and referral in Portland</b>	The Family and Community Alliance (FCA) is a home visiting program that provides parent education, advocacy and connection to community resources.	Home-based, Portland	503-282-3296 ext. 3868
<b>Mental health counseling and services</b>	Child and Families Outpatient Services provide therapy, mental health assessments, treatment planning, medication management, skills training and consultation. Intensive, in-home services are available for youth at risk of out-of-home placement.	N. Portland Rockwood	503-645-9010
<b>Prevention services supporting at risk youth</b>	The Youth Support Team (YST) program provides services for African American/Latino middle and high school aged youth and their families who are at high risk for abuse or interpersonal violence. The program supports accessing or directly providing a full range of mental health, addiction and prevention services. There are no income or insurance eligibility requirements.	Community-based	503-282-3296 ext. 1256
<b>Respite services for youth families</b>	The Respite Services for Youth program offers in-home respite to provide much needed breaks for families of youth with significant mental health needs.	Varies	503-805-4293
<b>Services for transition age youth and young adults</b>	The Transition Aged Youth (TAY) program serves youth and young adults, ages 16 to 24, during their transition to adulthood. The program works with young adults who have significant mental illnesses impacting their ability to successfully function in the community and achieve normal developmental milestones.	Community-based: King	503-710-8843
<b>Therapeutic support for youth who are victims of sex trafficking</b>	The program provides treatment and case management for this very specialized population as well as providing trainings to our community providers related to issues of working with this population.	Community-based	503-710-1513



## Clackamas County

Service	Description of Services	Locations	Contact
<b>Alcohol and drug abuse services for youth</b>	Youth Addictions provides alcohol and drug treatment services for youth ages 12 to 21 and their families, including integrated family and mental health services. Services are available in the community, including schools.	Milwaukie	503-645-9010
<b>Community-based intensive mental health services</b>	Intensive treatment services conducted in the home and/or community for youth ages 3 to 18 and their families. Participants in this program must meet eligibility requirements and get approval by the county Mental Health Organization.	Community-based	503-593-6208
<b>Early childhood mental health and prevention services</b>	A comprehensive array of prevention and mental health services are provided in collaboration with the community partners of the Gladstone Center for Children and Families.	Gladstone	503-496-5770
<b>Mental health counseling and services</b>	Child and Families Outpatient Services provide therapy, mental health assessments and treatment planning, medication management, skills training and consultation. Intensive, in-home services are available for youth at risk of out-of-home placement.	Milwaukie	503-645-9010
<b>Prevention services for the Latino community</b>	The Promotora Program connects families to community resources while offering individual parenting strategies and parenting classes. The program offers in-home services to Latino families with children 0 to 12 years of age.	Community-based	503-887-9149
<b>Early psychosis intervention for youth and young adults</b>	The Early Assessment Support Alliance program (EASA) program provides individual/family support, education, advocacy, and treatment to persons age 15-25 who are experiencing emerging symptoms of psychosis. The program also has a robust family component including multi-family groups. EASA will serve individuals who are publically or privately insured or who have no insurance.	Milwaukie Community-based	503-710-8843
<b>Services for transition age youth: adolescents &amp; young adults</b>	Transition Aged Youth (TAY) program serves youth and young adults, ages 16 to 24, during their transition into adulthood. The program works with young adults who have a significant mental illness impacting their ability to successfully function in the community and achieve normal developmental milestones.	Community-based Milwaukie	503-710-8843

For nearly all programs listed, LifeWorks NW serves people who have Oregon Health Plan, Medicaid, Medicare, and most commercial insurance plans. We have many programs for the uninsured, providing discounted or sometimes even free services. In addition, LifeWorks NW has many more programs that are accessible through a particular funding or partner organization (e.g., Child Welfare, Corrections, Housing Authority of Portland).



## Washington County

Service	Description of Services	Locations	Contact
<b>Alcohol and drug abuse treatment</b>	The Adult Addictions program provides outpatient and intensive outpatient services for adults dealing with alcohol and drug problems.	Beaverton Hillsboro Tigard	503-645-9010
<b>Alcohol and drug abuse treatment services for developmentally disabled adults</b>	The adult addictions developmentally disabled program provides specialized, intensive services for developmentally disabled adults dealing with drug and alcohol problems.	Beaverton	503-645-9010
<b>Alcohol and drug abuse treatment for Latino Adults</b>	The Latino Adult Addictions program provides bilingual, culturally specific outpatient and intensive outpatient services for Latino adults dealing with alcohol and drug problems.	Hillsboro	503-645-9010
<b>Alcohol and drug abuse treatment for mothers</b>	The Mountaindale Recovery Center provides residential substance abuse services for women who are pregnant or have children under 6 years of age.	Mountaindale	503-335-0855
<b>Alcohol and drug abuse treatment for women</b>	The Adult Addictions program provides outpatient and intensive services focusing on the unique needs of women in the recovery process, including abuse, relationship and parenting issues.	Hillsboro	503-645-9010
<b>Driving under the influence of intoxicants (DUII)</b>	The DUII Adult Addictions program provides outpatient services for adults required to receive treatment as part of a DUII sentence.	Beaverton Hillsboro Tigard	503-645-9010
<b>Early psychosis intervention for young adults</b>	The Early Assessment Support Alliance (EASA) program provides individual/family support, education, advocacy, and treatment to persons aged 15 to 25 who are experiencing emerging symptoms of psychosis. The program also has a robust family component including multi-family groups. EASA will serve individuals who are publicly or privately insured or who have no insurance.	Beaverton Outreach across county	503-705-9999
<b>Gambling treatment</b>	The Gambling Program provides free individualized treatment for gamblers and their families that includes a thorough assessment and crisis stabilization.	Cedar Mill Tigard	503-645-9010
<b>Intensive mental health services for young adults and adolescents</b>	The Transition Aged Youth Intensive Services (TAYIS) program serves clients between ages 16 to 24 with severe mental illness. Focus of treatment is client centered and strengths based. Treatment services include individual and group skills training, supported employment/education and psychiatric treatment. Services are oriented towards young adults transitioning into independence.	Beaverton Outreach across county	503-449-2249
<b>Mental health counseling</b>	The Adult Mental Health Outpatient program provides counseling services tailored to a wide range of needs through individual and group therapy.	Cedar Mill Hillsboro	503-645-9010
<b>Services for people with severe mental illness</b>	The Open Gate program provides therapy, case management, skills training, support and treatment for individuals diagnosed with bipolar disorder, schizophrenia, psychotic disorders and other mood disorders. Also provides supported employment services to qualified clients and employers.	Hillsboro Beaverton Outreach across County	503-645-9010

**Our mission at LifeWorks NW is to promote a healthy community by providing quality and culturally responsive mental health and addiction services across the lifespan.**

**Join us online at:**

**[www.lifeworksnw.org](http://www.lifeworksnw.org)**

**[www.twitter.com/lifeworksnw](https://www.twitter.com/lifeworksnw)**

**[www.facebook.com/lifeworksnwfanpage](https://www.facebook.com/lifeworksnwfanpage)**



## Multnomah County

Service	Description of Services	Locations	Contact
<b>Alcohol and drug abuse treatment</b>	The Adult Addictions program provides outpatient and intensive outpatient services for adults dealing with alcohol and drug problems.	Gresham N. Portland SW Portland	503-645-9010
<b>Alcohol and drug abuse treatment for African Americans</b>	Project for Community Recovery provides outpatient and intensive outpatient services for African Americans dealing with alcohol and drug problems.	N. Portland	503-645-9010
<b>Alcohol and drug abuse treatment for mothers</b>	Project Network provides residential substance abuse services for women who are pregnant or have children under age 6 and is designed to be culturally-relevant for African Americans.	N. Portland	503-548-4922
<b>Alcohol and drug abuse treatment for women</b>	This adult addiction program provides outpatient and intensive services focusing on the unique needs of women in the recovery process, including abuse, relationship, and parenting issues. Services for parenting women involved with the Department of Human Services.	Gresham N. Portland SW Portland	503-645-9010
<b>Driving under the influence of intoxicants (DUI)</b>	Adult Addictions DUII program provides outpatient and intensive outpatient services for adults required to receive treatment as part of a DUII sentence.	Gresham N. Portland SW Portland	503-645-9010
<b>Integrated mental health &amp; addictions services for women exiting prostitution</b>	The New Options for Women (NOW) program provides integrated, wraparound services for women involved in prostitution, including substance abuse, mental health treatment, case management and social support.	Rockwood	503-761-5272
<b>Mental health counseling</b>	Our Adult Mental Health Outpatient program provides counseling services tailored to a wide range of needs through individual/group therapy.	N. Portland Rockwood SW Portland	503-645-9010
<b>Services for people with Severe Mental Illness</b>	The Conquest Center program provides therapy, case management, skills training, support and treatment for individuals diagnosed with bipolar disorder, schizophrenia, psychotic disorders and other mood disorders. Also provides supported employment services to qualified clients and employers.	Gresham King Outreach across County	503-645-9010
<b>Services for transition age young adults &amp; youth</b>	The Transition Aged Youth program (TAY) serves youth and young adults, ages 16 to 21, during their transition into adulthood. The program works with young adults who have a significant mental illness impacting their ability to successfully function in the community and achieve normal developmental milestones.	Community-based King	503-710-8843

## Contact Us

Get in touch with us. To schedule an appointment at one of our clinics, please call 503-645-9010 or (Toll-Free) 888-645-1666, or e-mail [intake@lifeworksnw.org](mailto:intake@lifeworksnw.org). If this is an emergency, please dial 911.

## Clackamas County

Service	Description of Services	Locations	Contact
<b>Alcohol and drug abuse treatment</b>	Adult Addictions provides outpatient and intensive outpatient services for adults dealing with alcohol and drug problems.	Milwaukie	503-645-9010
<b>Driving under the influence of in-toxicants (DUII)</b>	The Adult Addictions DUII program provides outpatient and intensive outpatient services for adults required to receive treatment as part of a DUII sentence.	Milwaukie	503-645-9010
<b>Mental health counseling</b>	Our Adult Mental Health Outpatient program provides counseling services tailored to a wide range of needs through individual and group therapy, for clients who meet eligibility as indigent.	Milwaukie	503-645-9010
<b>Early psychosis intervention for youth and young adults</b>	The Early Assessment Support Alliance program (EASA) program provides individual/family support, education, advocacy, and treatment to persons age 15-25 who are experiencing emerging symptoms of psychosis. The program also has a robust family component including multi-family groups. EASA will serve individuals who are publically or privately insured or who have no insurance.	Milwaukie Community-based	503-710-8843
<b>Services for people with severe mental illness</b>	The Alta program provides therapy, case management, skills training, support and treatment for individuals diagnosed with bipolar disorder, schizophrenia, psychotic disorders and other mood disorders. The program also provides supported employment services to qualified clients and employers.	Milwaukie Outreach across the County	503-645-9010
<b>Services for transition age youth: young adults and youth</b>	The Transition Aged Youth program (TAY) serves youth and young adults, ages 16 to 24, during their transition into adulthood. The program works with young adults who have a significant mental illness impacting their ability to successfully function in the community and achieve normal developmental milestones.	Community-based	971-255-7697

## Who we serve

Helping people by offering caring services is the core of LifeWorks NW — making life better for those we serve, and strengthening the whole community. We have developed the most comprehensive array of integrated prevention, mental health and addiction services available, providing confidential, compassionate, effective support throughout the lifespan.





## Washington County

Service	Description of Services	Locations	Contact
<b>Mental health evaluation and consultation services</b>	The Older Adult Assessment and Consultation staff provide supportive counseling and services which may include psychiatric evaluation, medication consultation and minimal case management. As available, therapists can travel to older adult living facilities and homes for assessment and ongoing therapy. PASRR's (Preadmission Screening and Resident Reviews) are also available upon request of the adult living facilities.	Beaverton Home-based	503-645-9010
<b>Rehabilitation services</b>	The Stepping Stones program provides rehabilitation and stabilization for adults with long-term mental illness. The program operates Monday through Friday and provides specialized skills training for community integration. These classes are designed for older adult who have depression, anxiety, or other mental illnesses and are offered in a group format as part of our morning day services. One-on-one consultation and limited case management is available as appropriate.	Beaverton Home-based appointments as indicated	503-641-1475
<b>Training programs</b>	Self-study training for people who are caring for persons with mental illness. Continuing education units (CEU's) are available for those who work in adult foster homes.	Beaverton for pickup, Classes home-based	503-641-1475

## Multnomah & Clackamas Counties

LifeWorks NW Older Adults programs are mostly provided in Beaverton. Multnomah and Clackamas county residents are eligible to participate in our services. See services listed in the "Washington County" section above for more information.

### OUR LOCATIONS

**Albina**

4925 N. Albina Avenue

**King/NE Portland**

3716 NE MLK Jr. Blvd

**St. Johns**

8424 N Lombard Street

**Beaverton**

12350 SE 5th Street, Suite 100

**Millikan/Beaverton**

14255 SW Brigadoon Court

**Southwest Portland**

506 SW 6th Avenue, Suite 905

**Cedar Mill/Administration**

14600 NW Cornell Road

**Milwaukie**

17070 SE McLoughlin Blvd

**Tigard**

8770 SW Scoffins Street

**Gresham**

400 NE 7th Street

**Milwaukie/International Way**

4105 SE International Way, Ste 504

*For bus routes & more info,  
go to:*

*[www.lifeworksnw.org](http://www.lifeworksnw.org)*

**Hillsboro**

971 SW Walnut Street

**Murray/Beaverton**

3900 SW Murray, Suite 100

**Hillsboro/Main Street**

1340 E Main Street

**Rockwood**

17214 SE Division Street, Suite 2

*At LifeWorks NW, we believe  
life works when you get  
the support you need.*